

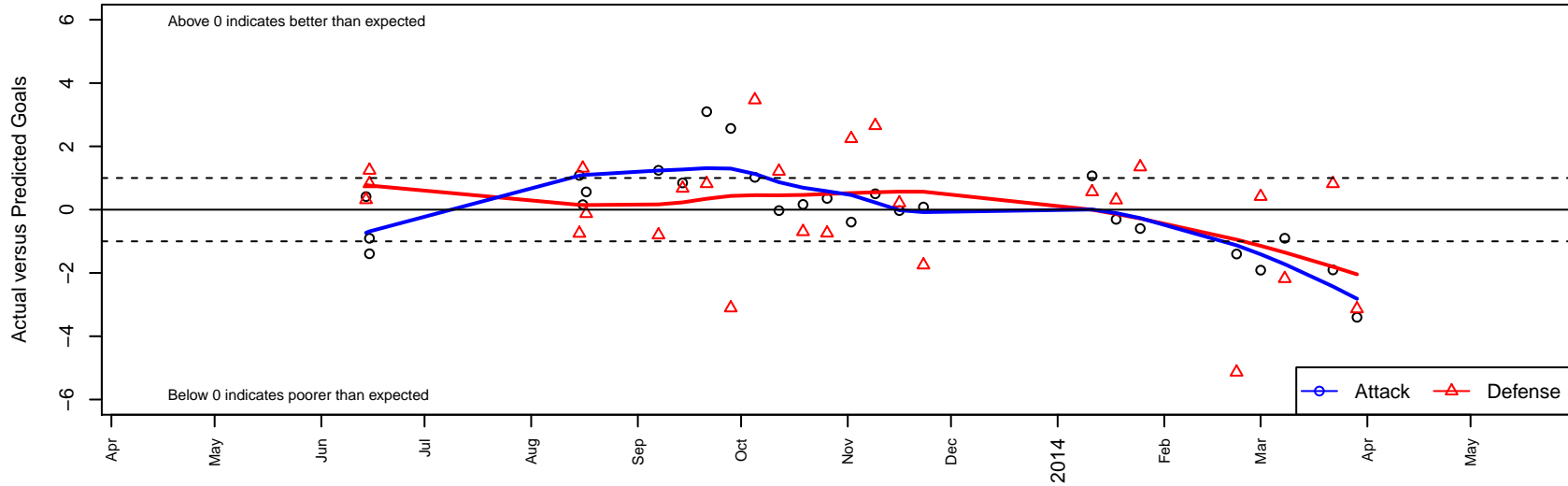
Seattle United NE Blue B99

Seattle United Regional
 Seattle, WA
 B99 total strength=832
 attack=1.59 defense=0.78
 fall league = NPSL B14D2, NPSL Spr B14D2
 alt names used:
 Seattle United NE Blue B99
 Seattle United NE B99 Blue
 SU NE B99 Blue
 SEATTLE UNITED NE B99-BLUE (WA)
 2013 Seattle United NE B99 Blue

Venues played:
 Shoreline Classic BU14
 Bigfoot Silver U14
 NPSL B14D2
 Founders Cup B99
 NPSL Spr B14D2



Seattle United NE Blue B99
 Dots are actual minus expected GF (blue circles) and GA (red triangles).
 Blue line is smoothed change in attack strength. Red is smoothed change in defense strength.



	date	home		away		venue	pred.home	pred.away
25496	2014-03-29	Seattle United NE Blue B99	0	Mukilteo Gators B99	7	NPSL Spr B14D2	3.40	3.86
25238	2014-03-22	Whatcom Rangers White B99	1	Seattle United NE Blue B99	0	NPSL Spr B14D2	1.82	1.90
24071	2014-03-08	Seattle United NE Blue B99	1	Whatcom Rangers White B99	4	NPSL Spr B14D2	1.90	1.82
23556	2014-03-01	Seattle United NE Blue B99	1	North Whidbey Tsunamis B99	1	NPSL Spr B14D2	2.91	1.42
23070	2014-02-22	Mukilteo Gators B99	9	Seattle United NE Blue B99	2	NPSL Spr B14D2	3.86	3.40
21754	2014-01-25	Seattle United NE Blue B99	0	Crossfire Select Taylor B99	3	Founders Cup B99	0.60	4.35
21364	2014-01-18	Storm King B99	4	Seattle United NE Blue B99	1	Founders Cup B99	4.31	1.31
21161	2014-01-11	Seattle United NE Blue B99	2	Mercer Island FC Tornado B99	3	Founders Cup B99	0.93	3.56
19190	2013-11-23	Seattle United NE Blue B99	1	NSC Thunder B99	4	NPSL B14D2	0.92	2.25
18586	2013-11-16	Silver Lake Blasters B99	2	Seattle United NE Blue B99	1	NPSL B14D2	2.21	1.03
17833	2013-11-09	Seattle United NE Blue B99	1	Kent United White B99	2	NPSL B14D2	0.50	4.65
16903	2013-11-02	Seattle United NE Blue B99	1	Seattle United Shoreline Blue B99	1	NPSL B14D2	1.39	3.24
16017	2013-10-26	Seattle United W Blue B99	3	Seattle United NE Blue B99	2	NPSL B14D2	2.26	1.64
15085	2013-10-19	NWSC Islanders B99	2	Seattle United NE Blue B99	4	NPSL B14D2	1.30	3.83
14038	2013-10-12	Seattle United NE Blue B99	1	Silver Lake Blasters B99	1	NPSL B14D2	1.03	2.21
13026	2013-10-05	Seattle United S Blue B99	0	Seattle United NE Blue B99	2	NPSL B14D2	3.47	0.98
12055	2013-09-28	Newport FC Warriors B99	6	Seattle United NE Blue B99	4	NPSL B14D2	2.89	1.43
11123	2013-09-21	Seattle United NE Blue B99	5	Whatcom Rangers White B99	1	NPSL B14D2	1.90	1.82
10153	2013-09-14	Seattle United NE Blue B99	6	Seattle United NE White B99	0	NPSL B14D2	5.15	0.67
9200	2013-09-07	ISC Arsenal Red B99	2	Seattle United NE Blue B99	4	NPSL B14D2	1.20	2.76
7177	2013-08-17	Seattle United NE Blue B99	2	MVP Rapids White B99	2	Bigfoot Silver U14	1.44	1.87
6852	2013-08-16	Gala FC Red B99	2	Seattle United NE Blue B99	1	Bigfoot Silver U14	3.31	0.84
6690	2013-08-15	NSC Thunder B99	3	Seattle United NE Blue B99	2	Bigfoot Silver U14	2.25	0.92
1203	2013-06-15	Seattle United Shoreline Blue B99	2	Seattle United NE Blue B99	0	Shoreline Classic BU14	3.24	1.39
1206	2013-06-15	TBSC Arsenal FC B99	1	Seattle United NE Blue B99	2	Shoreline Classic BU14	1.82	2.90
984	2013-06-14	Seattle United NE Blue B99	1	FC Edmonds Forza B99	5	Shoreline Classic BU14	0.59	5.31